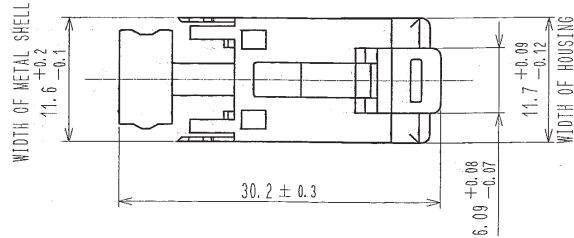
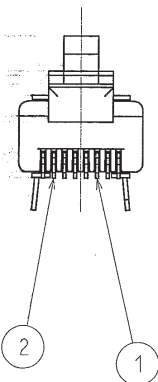
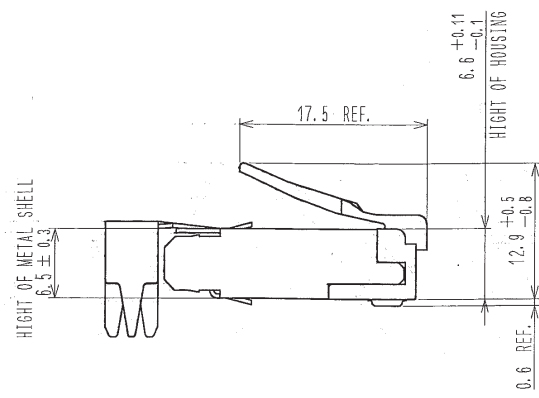


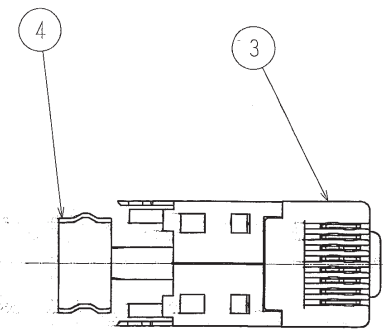
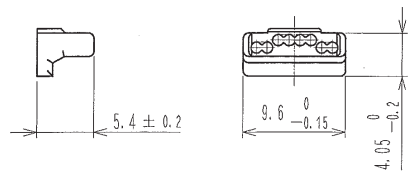
COUNT	DESCRIPTION OF REVISIONS	BY	CHKD	DATE	COUNT	DESCRIPTION OF REVISIONS	BY	CHKD	DATE
△				..	△				..
△				..	△				..
△				..	△				..



APPLICABLE CABLE	
INSULATOR	CONDUCTOR
CONDUCTOR	AWG#24 TO #26
INSULATOR OUTER DIAMETER	φ0.9 TO φ1.0
JACKET	SHIELD
JACKET OUTER DIAMETER	φ5.8 TO φ6.0
	SHIELD PAIR



5 ATTACHED



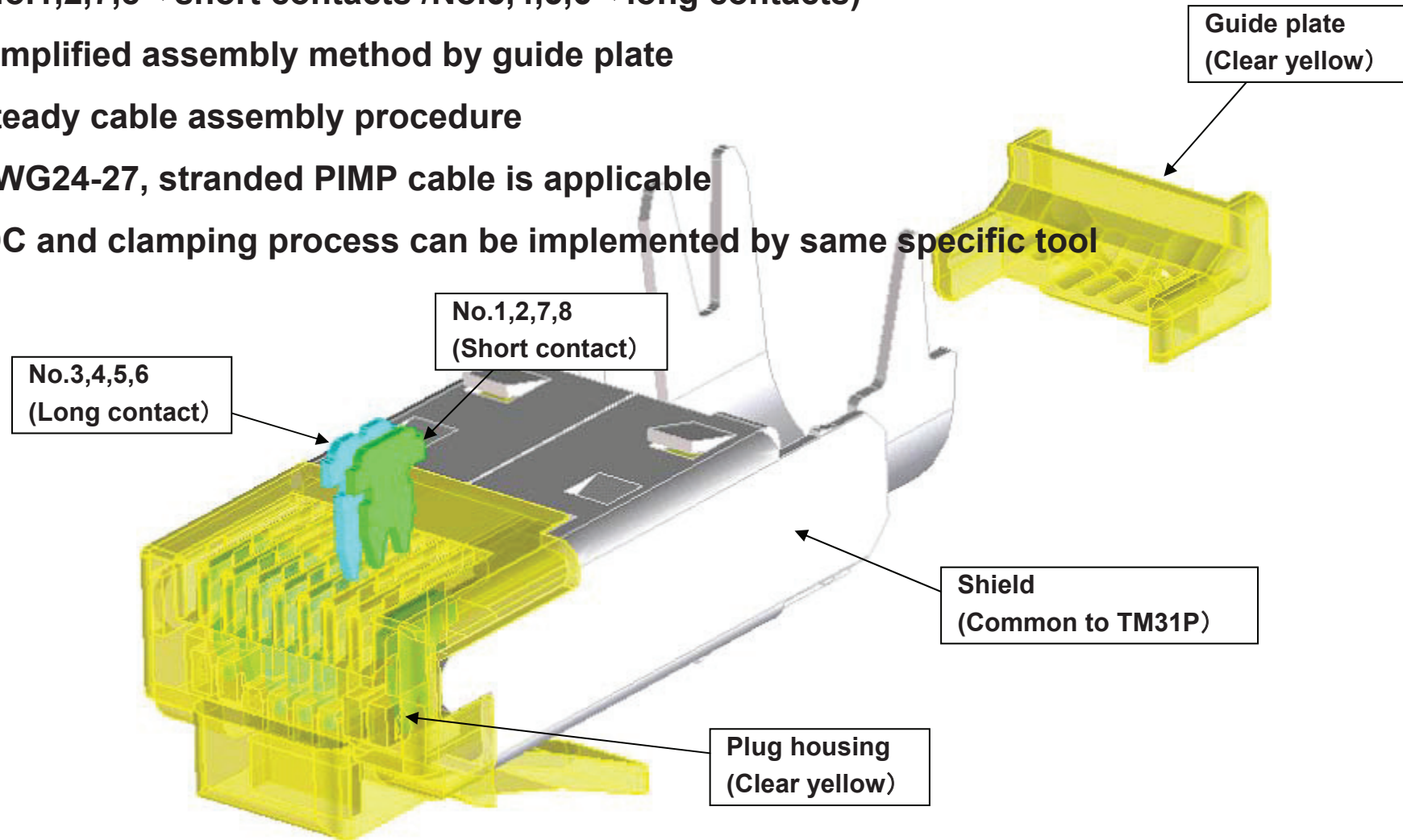
1~2	PHOSPHOR BRONZE	CONTACT: Au 1.27μm min OTHER: Au 0.03μm min UNDER: Ni 2μm min	4	POLYCARBONATE	(CLEAR YELLOW)	
			3	STAINLESS STEEL	Ni 0.5μm min	
			2	POLYCARBONATE	(CLEAR YELLOW)	
NO.	MATERIAL	FINISH, REMARKS	NO.	MATERIAL	FINISH, REMARKS	
CODE NO.(OLD)		DRAWN	DESIGNED	CHECKED	APPROVED	RELEASED
DRAWING FOR REFERENCE OR PRELIMINARIES		M. Itano	M. Itano	H. Yamada	Y. Iwami	ENG 08.7.18 DEPT
		'08.07.18	'08.07.18	'08.07.18	'08.07.18	
DRAWING NO. TEDC3-123817		PART NO. TM31P-88P		CODE NO. CL222		1/1
SCALE 2 : 1		UNITS mm		HRS HIROSE ELECTRIC CO., LTD		FORM NO. 229

TO  
Q

# Plug : TM31P-TM-88P



1. Plug design satisfying CAT6a performance  
(No.1,2,7,8⇒short contacts /No.3,4,5,6⇒long contacts)
2. Simplified assembly method by guide plate
3. Steady cable assembly procedure
4. AWG24-27, stranded PIMP cable is applicable
5. IDC and clamping process can be implemented by same specific tool



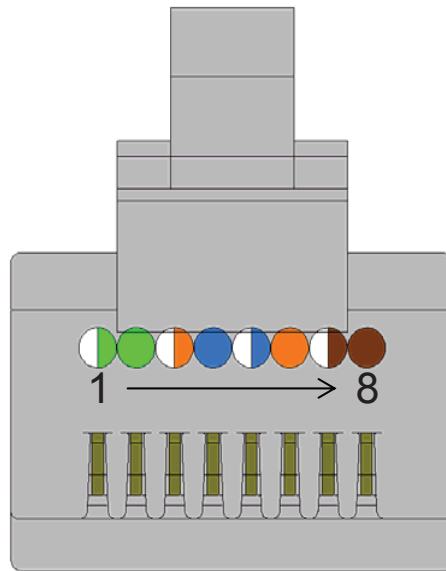
# Plug : TM31P-TM-88P



## Plug design satisfying CAT6a requirements

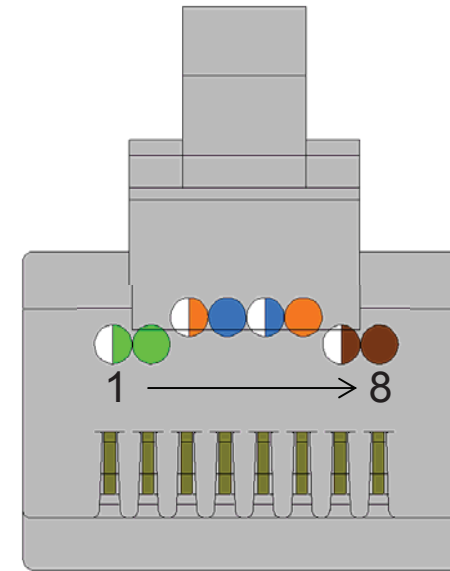
### 1) Unique contact arrangement

CAT6 Plug (TM21DP-TM-88P)



Improved Transmission Characteristics

CAT6a Plug (TM31P-TM-88P)



Limited performance due to the contact arrangement in a single row

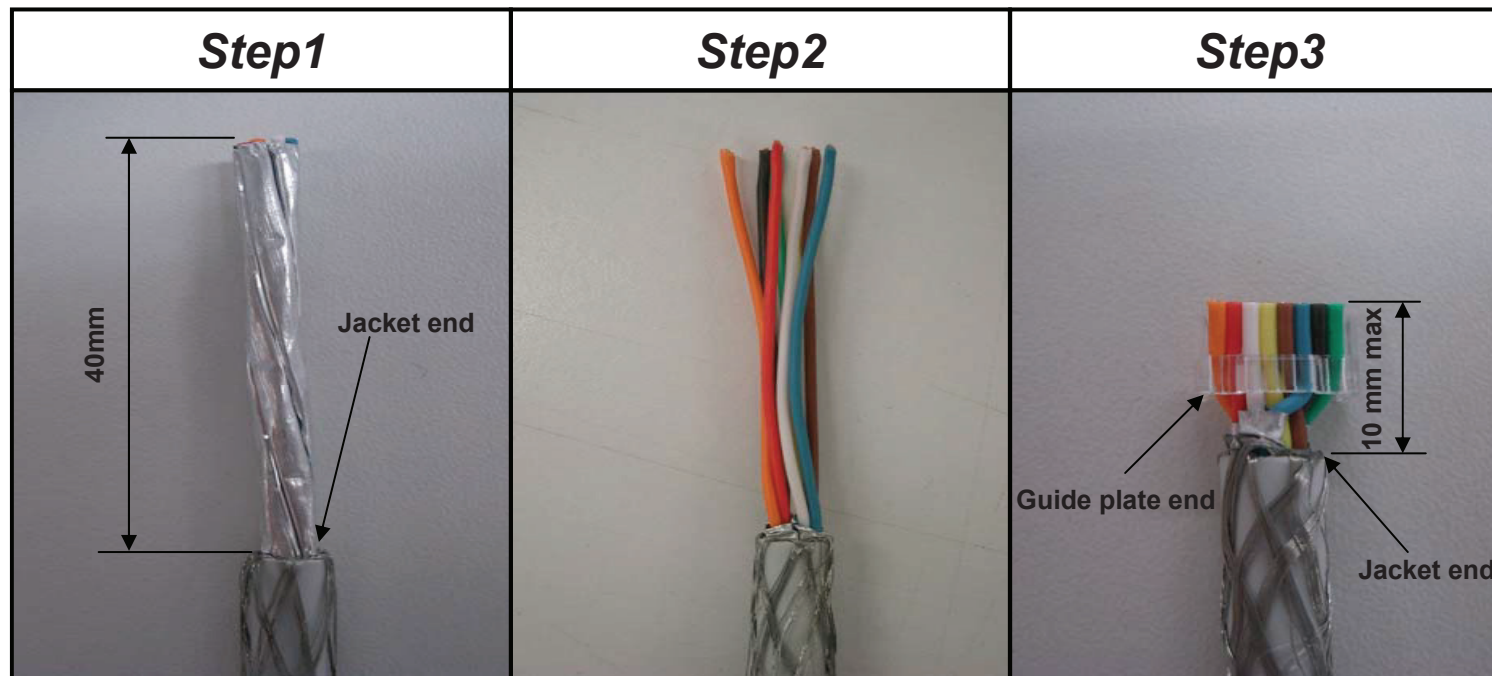
The contact arrangement in two rows makes performance improved (No3, 4, 5, 6 contacts are isolated from No1, 2, 7, 8 contacts)

# Plug : TM31P-TM-88P



Cable assembly method to have CAT6a performance

Plug design makes it possible for users to lengthen jacket end and have steady CAT6a performance.

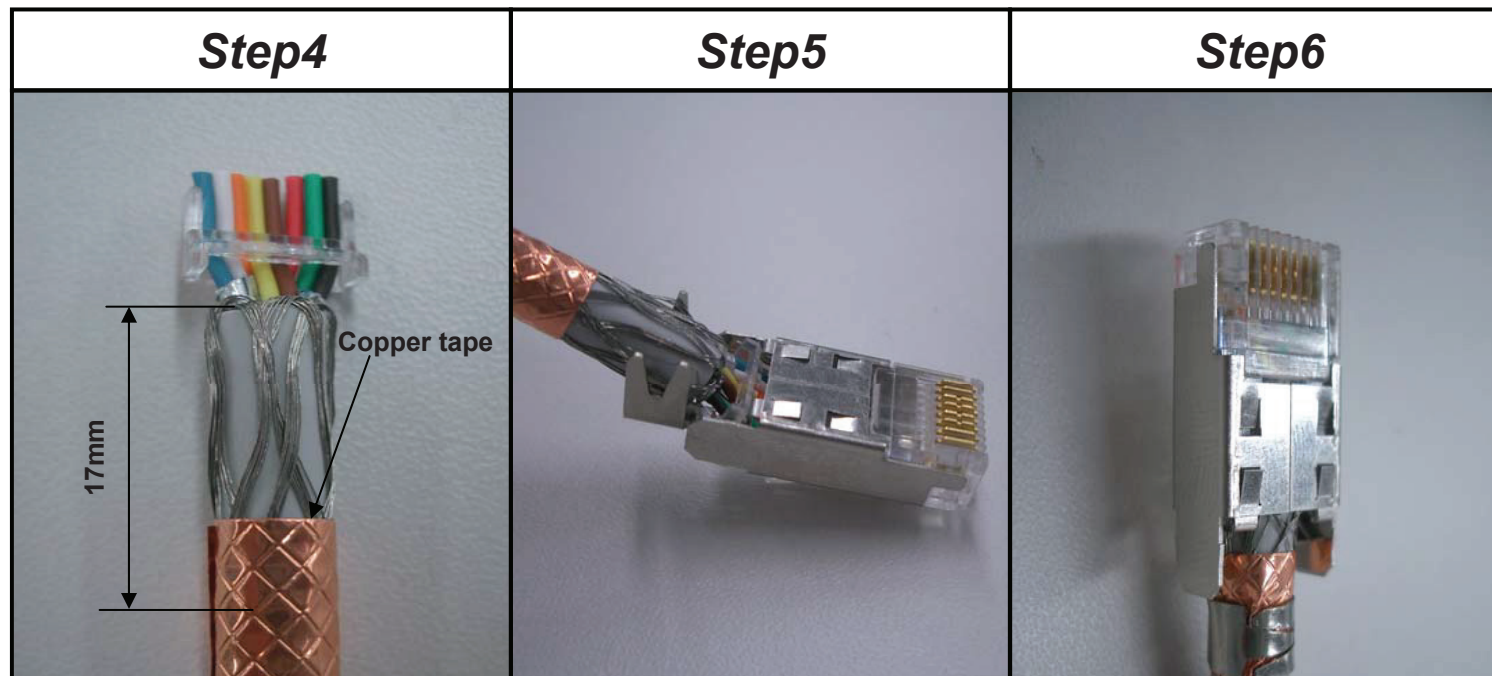


# Plug : TM31P-TM-88P



Cable assembly method to have CAT6a performance

Plug design makes it possible for users to lengthen jacket end and have steady CAT6a performance.



## Plug : TM31P-TM-88P



Outer Appearance of TM31P-TM-88P with cover

TM31P-TM-88P can be assembled with TM21 covers.

Our CAT6A modular plug is consist of just 3 parts.

1. Plug Body (TM31P-TM-88P)
2. Guide Plate (TM31P Guide Plate)
3. Cover (TM21 Cover)

